



Awaken in your *Dream*
home gilded by
Brilliant Sunrays.

How pleasant it would be to wake up to the
pleasant sight of golden sunrays brightening
every aspect of your life!

How reviving it would be to raise
your cuppa tea to the ever so radiant sun!

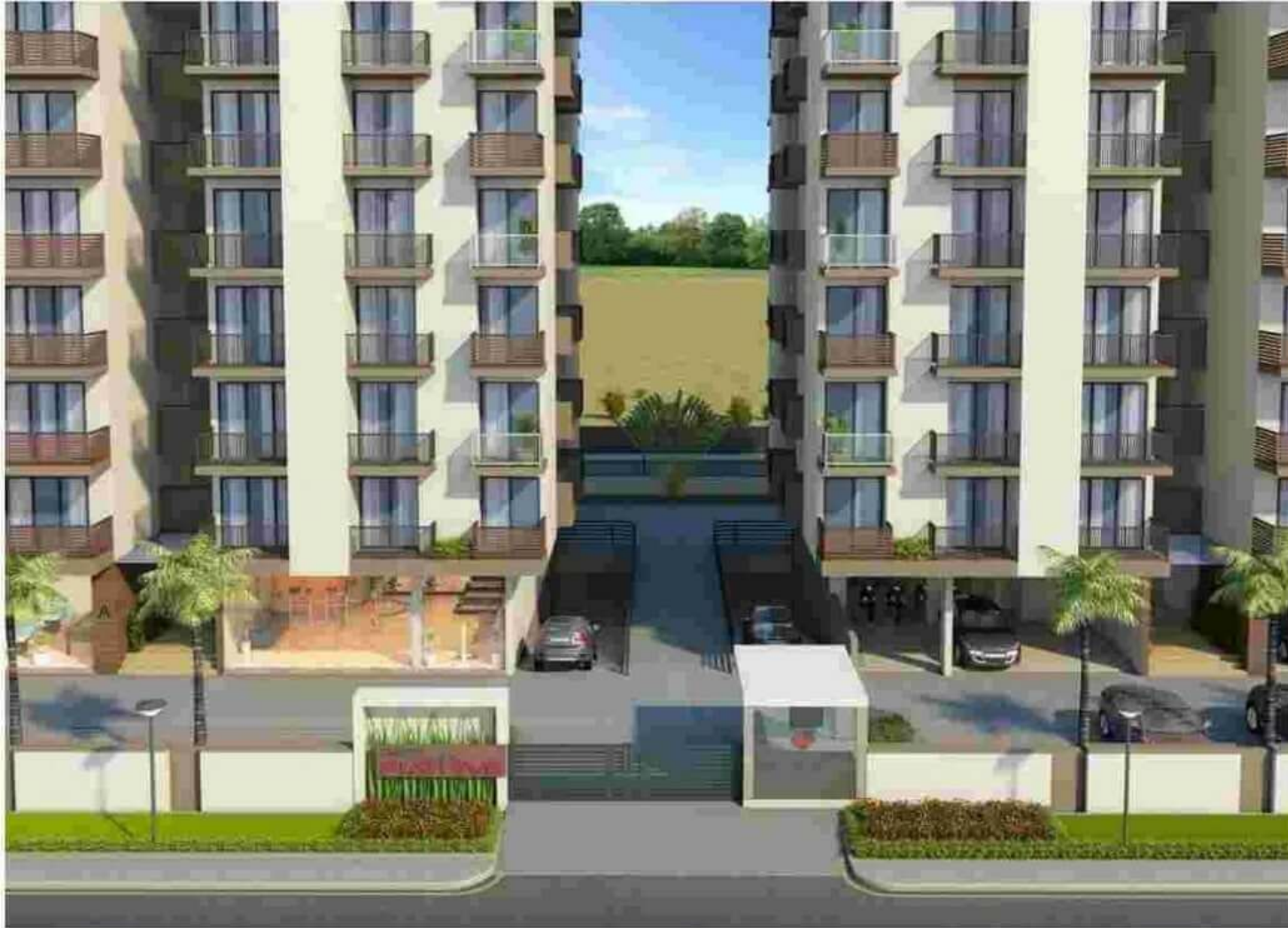
At **Saarth Pratham**, you can experience the
shimmer and warmth of sheer bliss, every other day.

A modern, multi-story apartment building with a light beige facade and dark brown accents. The building features numerous balconies with glass railings and dark wood paneling. The ground floor has a landscaped area with greenery and a paved road in the foreground. The sky is a clear, bright blue.

Enrapture Your *Mind* and
Experience your Spirits *Soar High*.

Enter the *Euphoria* of Feeling
the *Cool Breeze* Stroke Your Face.

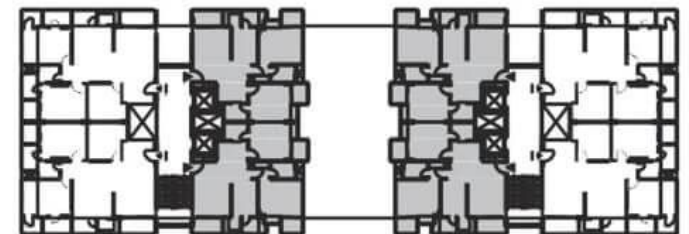




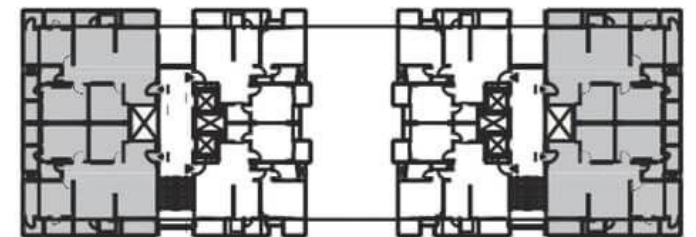
Enjoy *Space*.
Enjoy *Finesse*.

- Sunlight & ventilation friendly design
- Elegant elevation
- Premium grade building material utilization





2 - BHK
 SBU AREA: 1265.00 SQ.FT.



3 - BHK
SBU AREA :- 1665 SQ.FT



Amenities

- ☐ Swimming pool
- ☐ Air conditioned gymnasium
- ☐ Air conditioned club house
- ☐ Hall for society gatherings
- Spacious & well ventilated lobbies on all floors
- ☐ Two high speed elevators in each tower
- ☐ Large landscaped garden with walk way
- ☐ Hi-tech security system managed by well trained security personnel
- 24x7 power back up for common area lights & elevators
- Advanced fire fighting system
- ☐ Two level covered parking
- ☐ Separate entry and exit for basement parking



Project Specifications

- Seismic Zone II compliant RCC frame structure
- Store and utility area in each flat
- Puja room in 3bhk flats
- Two side exterior opening in each flat
- P.O.P. finish on all walls
- Laminated flush doors and UPVC / Aluminum profile windows
- Full glass French UPVC / Aluminum profile section in balconies
- Vitrified tile flooring in all rooms
- Branded, fire resistant electrical wire and modular switches
- Kitchen with granite top, stainless steel sink and upto 2 feet high ceramic tile dado
- Toilet with antiskid ceramic tiles on floor, ceramic tiles up to 7 feet height on the walls and premium brand sanitary ware and C.P. fittings



Location: 26°28'31.42"N | 74°36'04.65"E

A Project by:

Site: G-4 "Saarth Pratham", Nr. Haribhau Upadhyay Nagar, Ajmer - 305001.
Tel: 0145 2601 611 / 2601 711
Email: info@saarthdevelopers.com | www.saarthdevelopers.com

Regd. Office: A 12/1, Shakli Enclave, Judges Bungalow Cross Road, Ahmedabad.

Architect: Studio RKR Architecture - +91 98286 00550



Marketed by:

SELL | BUY | RENT | LOAN
flatsinajmer
(A SUKHSAMPATTI Venture) .com

**SUKH
SAMPATTI**
REAL ASSET. REAL HAPPINESS..

Contact for booking and Site visit: +91 9828 464646

Disclaimer: The project developer reserves all the rights to make any additions / alterations / changes to the designs and / or specifications of the project without prior notice and same shall be binding to all the members. This brochure is not to be treated as a part of a legal document. It is meant for easy display and general information only.

Your *Home*,
Your Ultimate *Comfort Zone*

